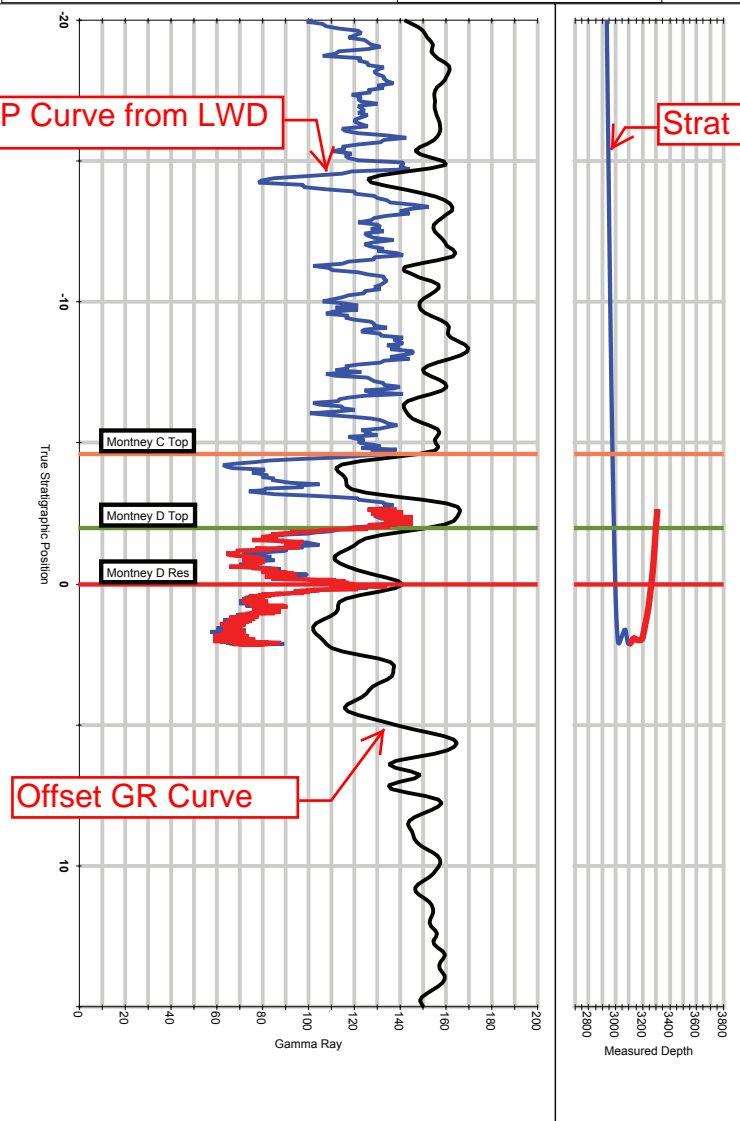


Montney Shale: British Columbia, Canada

**TSP Log**  
**Any Operator Montney Shale Example Original Hole**



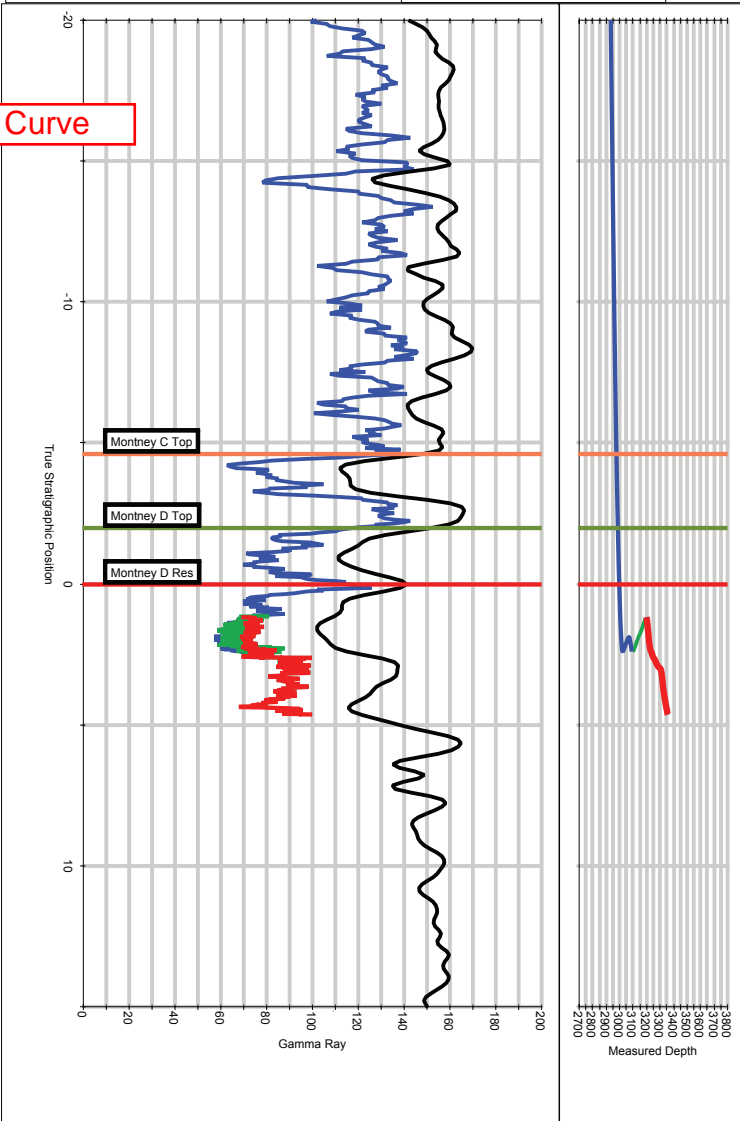
3313.00 MD -435.21 VS 2910.54 TVD  
 1.0 Dip -2.68 M above top target  
 Stratigraphic Reference: Montney D Ta



**TSP Log**  
**Any Operator Montney Shale Example ST1**



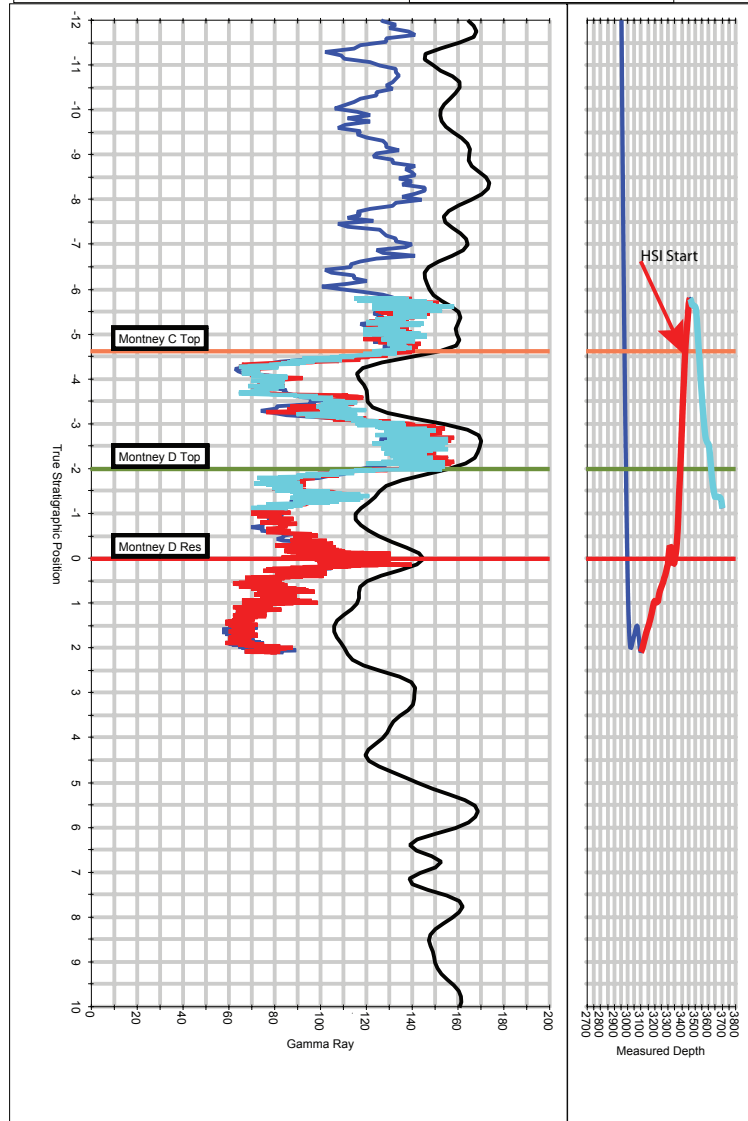
3360.40 MD -482.19 VS 2917.36 TVD  
 0.3 Dip 4.61 M below top target  
 Stratigraphic Reference: Montney D Ta



**TSP Log**  
**Any Operator Montney Shale Example ST2**



3702.80 MD -824.29 VS 2920.35 TVD  
 1.3 Dip -1.13 M above top target  
 Stratigraphic Reference: Montney D Ta



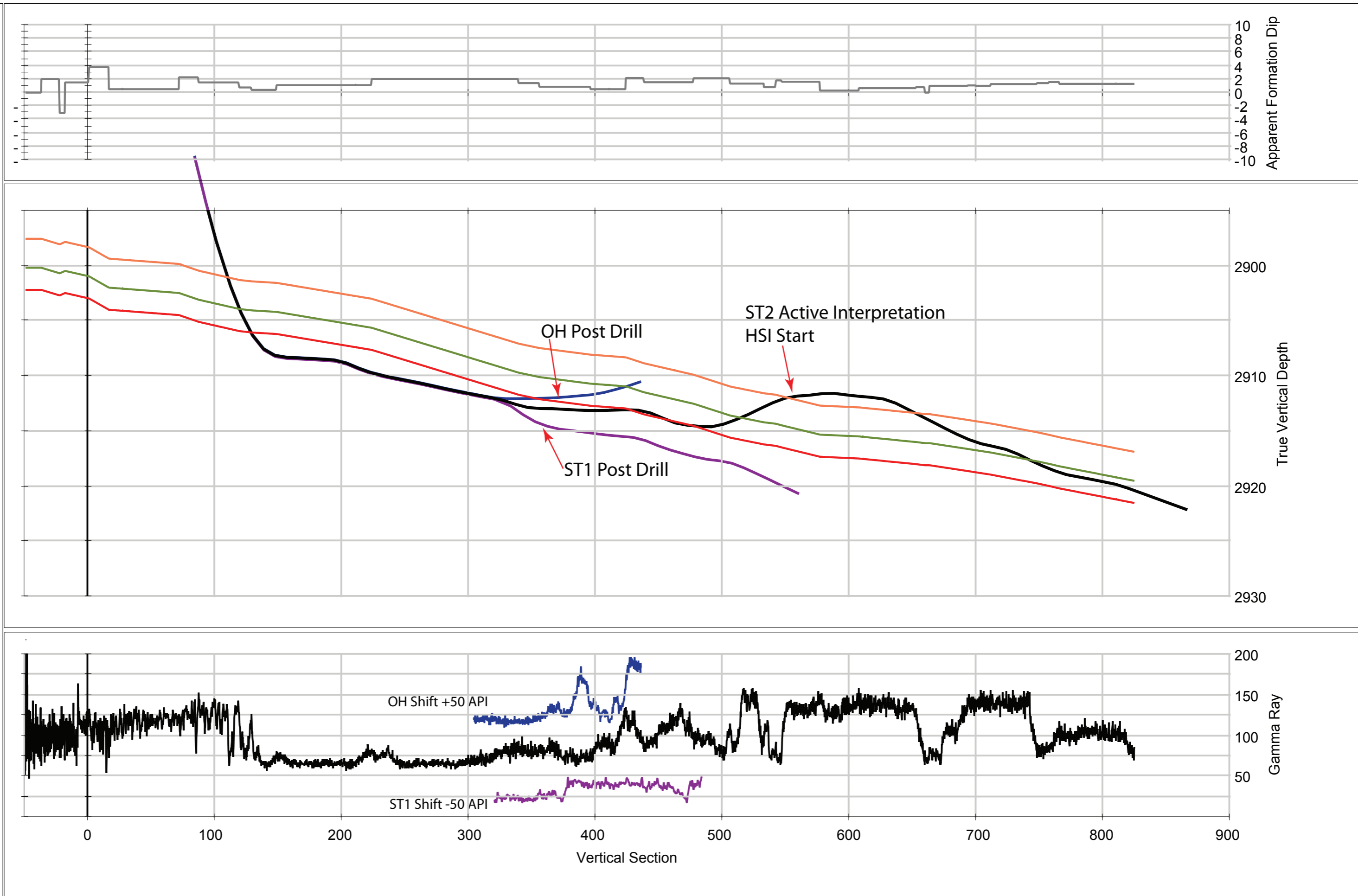
**TSP LOG ORIGINAL HOLE**

**TSP LOG Sidetrack 1 HOLE**

**TSP LOG Sidetrack 2 HOLE**



**Wellbore Plot - Vertical Section View**  
**Any Operator Montney Shale 1H**



**Wellbore Plot: Vertical Section View**